

Material
expression

POHIO ADAMS ARCHITECTS



The layering of textured tiles, timber and steel within the sandstone-walled spaces of a heritage home in Sydney express an elegantly balanced approach to materiality.

Photography by Katherine Lu

At first glance of this home in Sydney's Paddington, you'd be forgiven for thinking Pohio Adams Architects had transformed a heritage Georgian house into a trendy bar. The home's ground-floor living areas have a certain commercial quality and, whether it's due to the low ceiling height or the broad expanse they occupy, they do evoke the mood of a nightclub or atmospheric restaurant. But of course, co-directors Bianca Pohio and Christopher Adams approached this project with the intent to create an open kitchen, dining and lounge space that was primarily for entertaining and that shirked conservatism.

It helped that they had such good bones to work with and the home's existing sandstone walls were the starting point for a design that celebrates materiality. Opening up this lower level required a fair bit of structural steelwork to produce such large spans. This is what lends the interior its industrial-style aesthetic, as does the new burnished white concrete floor, which helps bounce the light around a space that was previously dark and shadowy. A large, blackened-steel spiral staircase provides an anchor within the living spaces, countering the horizontality of the broad room, and a combination of colour and texture differentiates the kitchen, while still allowing it to remain connected to the rest of the space.

Every non-structural element functions as an insertion. In the kitchen, for example, the joinery is freestanding, as is the splashback, which comprises

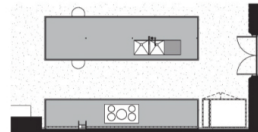
a tiled panel and steel frame that hovers off the sandstone wall. "This gives you a very clear understanding of the whole space," Chris explains. "You can see from corner to corner, and so everything reads as an object installed within a broader context." Treating the kitchen as a piece of furniture is a design solution that has certainly increased in popularity in recent times and, in this case, the architects have adopted the trend to great effect, emphasizing a sense of craftsmanship in the process.

The handmade tiles on the kitchen splashback are also used in the bathroom and barbecue area, creating a consistent palette that serves to establish visual cohesion between the home's interior and exterior. There's something incredibly appealing about this deliciously glossy, treacle-coloured finish that simultaneously contrasts with the sandstone's matt surface and complements the use of weathering steel in the outdoor entertainment area. This elegant renovation is a perfect study in how to respect the inherent material beauty of an existing built structure by working sensitively to arrive at a fine balance between old and new. ©

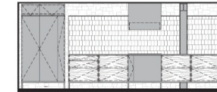


Lower ground floor plan 1:400

- 1 Kitchen
- 2 Butler's pantry
- 3 Dining
- 4 Living
- 5 Bathroom
- 6 Barbecue area



Kitchen plan 1:100



Kitchen elevation 1:100

01 The textural kitchen combines sandstone walls with a handmade tile splashback and burnished concrete floors.

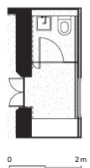
02 A blackened-steel spiral staircase anchors the open-plan living space.



03 The bathroom features the same handmade tiles and exposed sandstone walls as the kitchen.

Kitchen products
Internal walls: Existing sandstone; handmade glazed Moroccan tiles from Onsite
Flooring: White burnished concrete; brass trims
Joinery: Black slate benchtops from Bisanna Tiles; teak veneer cupboard fronts; custom mild steel shelving and cupboard fronts; handmade glazed Moroccan tiles from Onsite
Lighting: Custom LED strip lighting; Eutrac track lights from Dedece; Davide Groppi downlights from Dedece
Sinks and tapware: Vola tapware in black from Sydney Tap and Bathroomware; Abey undermount sink in black from Winning Appliances
Appliances: Miele dishwasher, oven and cooktop; Fisher and Paykel french door fridge, refrigeration drawer, extractor and barbecue
Doors and windows: Steel windows in Interpon Powder Coatings Sable Bass powdercoat, and brass hardware and doorhandles from Steel Windows Australia
Furniture: Bassam Fellows CB-22 Tractor Counter Stool in Walnut from Living Edge; dining table by Hans Wegner; chair with ottoman by Marcel Breuer

Bathroom products
Internal walls: Existing sandstone; handmade glazed Moroccan tiles from Onsite
Flooring: White burnished concrete
Lighting: Apparatus Trapeze wall light; Kreon Down light from Dedece
Tapware and fittings: Vola tapware in black
Sanitaryware: Studio Bagno wall-mounted basin; Astra Walker Pura wall-hung toilet suite
Doors and windows: Steel windows in Interpon Powder Coatings Sable Bass powdercoat, and brass hardware and doorhandles from Steel Windows Australia
Other: Brass-framed mirror



Bathroom plan 1:100



Bathroom elevations 1:100

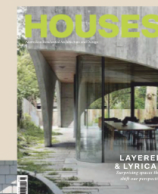


Architect
 Pohio Adams Architects
 +61 408 918 058
 info@pohioadams.com
 pohioadams.com

Project team: Bianca Pohio, Christopher Adams, Matteo Pollani
Builder: Superior Interiors
Joiner: Ital Furniture



Be inspired
 by Australia's
 best homes
Subscribe



Architect: Vokas and Peters / Photography: Christopher Frederick Jones

Visit architecturemedia.com/store/houses

Annual digital subscription (supplied by Zinio) 6 issues 1 year
 Instant delivery anywhere in the world A\$49

Annual print subscription 6 issues

Region	3 years	2 years	1 year
Australia/New Zealand	A\$196	A\$136	A\$71
US/Canada	US\$248	US\$173	US\$90
Rest of World Air	A\$310	A\$213	A\$110



Australia, New Zealand and the rest of the world subscriptions:
 +61 3 8899 1000
 subscribe@archmedia.com.au

Publisher:
 Architecture Media Pty Ltd
 Level 6, 163 Eastern Road
 South Melbourne 3205
 Victoria, Australia